

## SINGLE AXLE



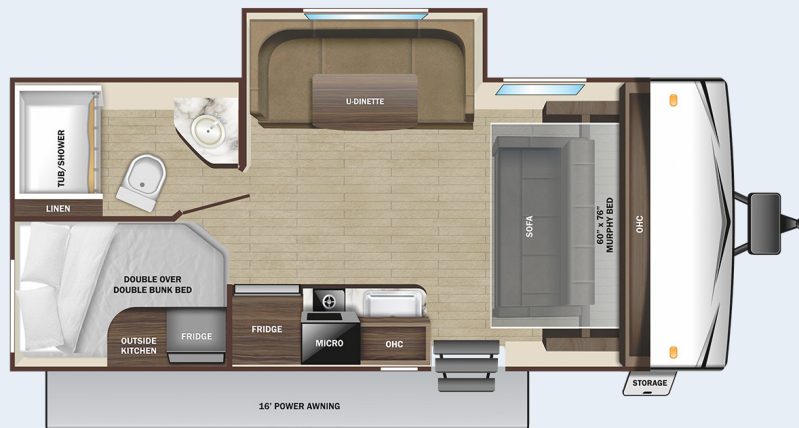
180BHS



19BH

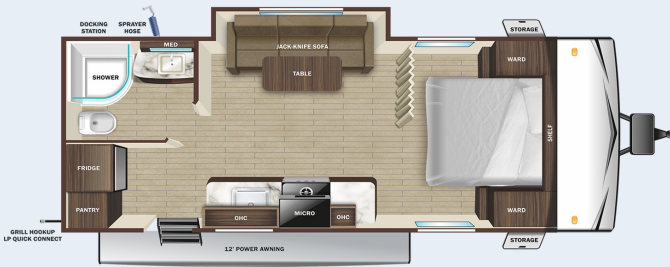


182RB



188BHS

## DUAL AXLE



20FBS



26BHS <sup>A</sup> OPTION



20MB



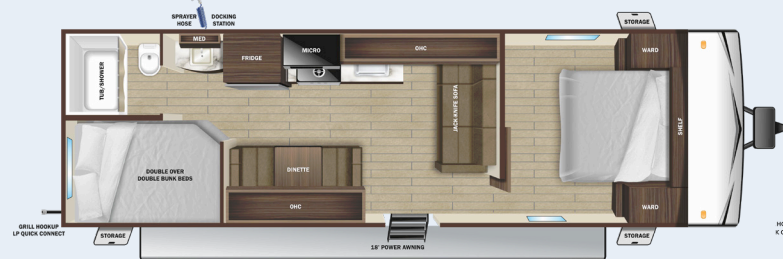
26RLS



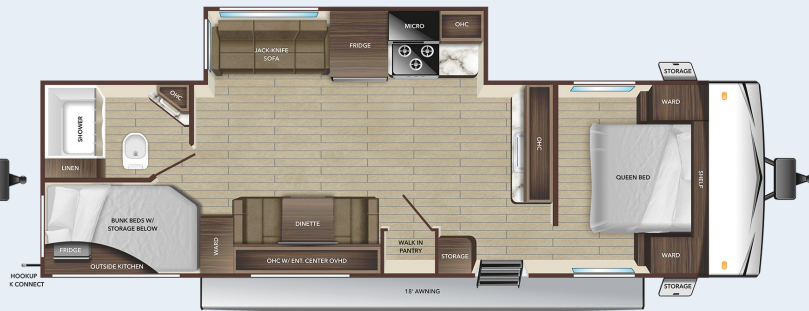
22MLS



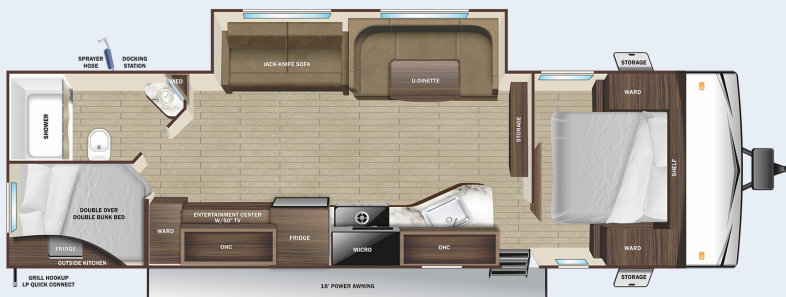
27BH



26BH



27BHP <sup>A</sup> OPTION

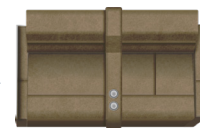


28BHS <sup>A</sup> OPTION

### OPEN RANGE CONVENTIONAL

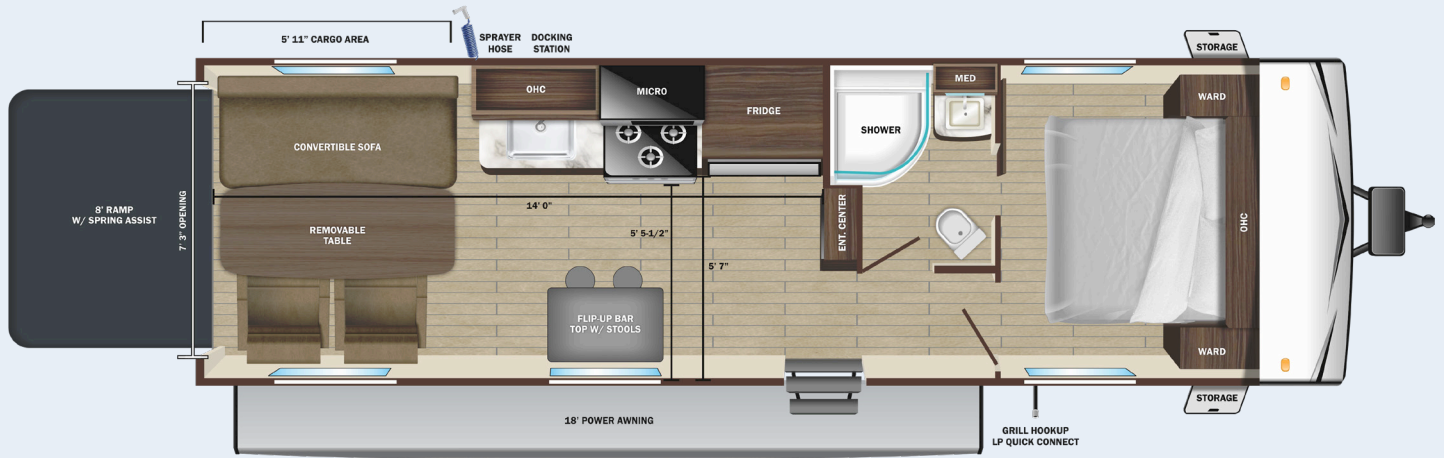
### FLOORPLAN OPTION

A

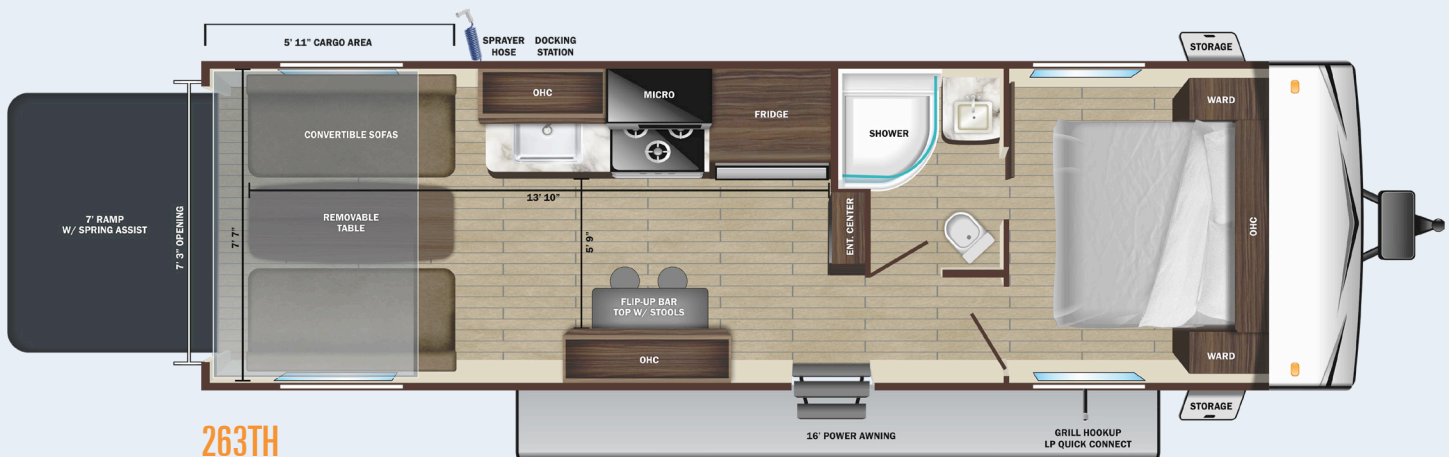


Theater Seat

## TOY HAULERS



25TH



263TH

## STANDARD INTERIOR EQUIPMENT

- » 8 cu. ft. 12V Refrigerator
- » 75 lb. ball bearing drawer guides
- » 81" interior height
- » Ceiling mount bluetooth® speaker
- » Flush floor slides with residential vinyl flooring (select models)
- » Foot flush toilet
- » Hidden hinge cabinet door hinges
- » LED interior lighting
- » Magnet cabinet catches
- » Pleated blackout night shades
- » Pocket-screwed lumbercore cabinet construction
- » Pressed membrane kitchen countertops
- » Range hood
- » Residential high-rise kitchen faucet
- » Single basin under-mount kitchen sink
- » Solid Hardwood cabinet doors
- » Solid Hardwood drawer fronts
- » Storage below main bed
- » USB Charging Port at beds and bunks

## STANDARD EXTERIOR EQUIPMENT

- » 120 GFCI protected receptacle
- » 5/8" main floor decking
- » 96" exterior width
- » Black front diamond plate protection
- » Exterior docking center (dual axle models)
- » Detachable power cords
- » Fiberglass insulation
- » Flexible LP lines
- » Galvanized wheel wells
- » Grab handle
- » In-frame battery rack
- » Magnetic baggage door catches
- » Magnum Roof™ system
- » PVC roofing membrane (limited lifetime warranty)
- » Rain guttering with molded drip spouts
- » Rear camera prep

- » Safety bumper with drain hose carrier and end caps
- » Self-adjusting electric brakes and E-Z Lube® axles
- » Thermal Seal- enclosed, insulated, and heated underbelly and fully insulated roof with a PVC roofing membrane (dual axle models)
- » Tinted safety-glass windows throughout

## CUSTOMER CONVENIENCE PACKAGE (MANDATORY)

- » 13,500 BTU roof mounted A/C
- » 17" oven (dual axle models)
- » 2-burner range with glass cover (single axle models)
- » 3-burner range with glass cover (dual axle models)
- » Dome style digital TV antenna
- » Gas/electric water heater
- » Friction hinge entrance door with window and shade prep
- » Microwave
- » Powered awning with LED lighting
- » Powered bathroom vent
- » Nitrogen filled radial tires
- » Residential vinyl flooring throughout
- » Stabilizer jacks (4-dual axle models, 2-single axle models)
- » Solid swing down step (main)
- » Water heater bypass
- » Xtend Solar I Package (200 watt solar panel with 30 amp controller)

## OPTIONS

- » 14" Aluminum Rims 14" (182RB, 20MB, 20FBS, 22MLS, 26BH, 26BHS, 26RLS, 27BH, 28BHS, 263TH)
- » 15" Aluminum Rims 15" (19BH, 180BHS, 188BHS, 25TH)
- » 15,000 BTU A/C (dual axle models)
- » 50 amp service with 2nd A/C (26BHS, 26RLS, 28BHS)
- » Fiberglass Sidewalls (N/A 25TH, 263TH) (N/A Olympia)
- » Griddle with bumper bracket (20FBS, 26BH, 20MB, 26RLS, 182RB, 19BH, 180BHS)
- » MOAB Pkg (Western built units only) (Aluminum Rims option N/A) (N/A 25TH, 263TH)
- » Ramp Patio (25TH, 263TH)
- » Smart TV (Std. on 28BHS)
- » Spare tire with carrier (mandatory on single axle models)
- » Theater seat (Std. on 22MLS, 26BHS, 28BHS)

## SPECIFICATIONS

May Include Estimated Values

	180BHS	19BH	182RB	188BHS**	20FBS	20MB	22MLS	26BH	26RLS	27BH**	27BHP	26BHS	28BHS	25TH	263TH***
Unloaded Vehicle Weight (Eastern) (lbs.)	3,785	3,540	3,605	4,245	4,615	4,315	5,265	4,875	5,890	5,210	6,320	5,820	6,330	5,610	5,290
Unloaded Vehicle Weight (Western) (lbs.)	N/A	3,520	TBD	600	TBD	4,275	4,765	4,795	5,890	670	N/A	N/A	N/A	N/A	920
Dry Hitch Weight (Eastern) (lbs.)	405	395	380	5,300	480	530	500	645	750	7,000	765	730	760	875	7,600
Dry Hitch Weight(Western) (lbs.)	405	385	N/A	1,055	N/A	490	480	525	750	1,790	N/A	N/A	745	N/A	2,310
Gross Vehicle Weight Rating (Eastern) (GVWR)	4,900	4,995	4,650	23' 10"	6,250	6,000	6,700	6,850	7,600	30' 7"	7,995	7,500	7,900	8,850	30' 4"
Gross Vehicle Weight Rating (Western) (GVWR)	4,900	4,650	TBD	10' 7"	TBD	5,850	6,995	n/a	7,900	10' 6"	N/A	N/A	8,300	N/A	10' 6"
Cargo(Eastern)(Gross)	1,210	1,455	1,045	8' 0"	2,040	1,685	1,435	1,975	1,710	8' 0"	1,675	2,040	1,570	3,240	8' 0"
Cargo (Western)(Gross)	1,210	1,130	TBD	10' 6"	TBD	1,575	1,730	2,055	2,010	N/A	N/A	N/A	1,970	N/A	N/A
Exterior Length (Overall)	22' 2"	22' 4"	22' 11"	6' 9"	23' 8"	24' 6"	27' 6"	29' 6"	30' 1"	6' 9"	32' 1"	30' 8"	33' 9"	29' 11"	6' 9"
Exterior Height	10' 0"	9' 11"	9' 10"	26	10' 6"	9' 10"	10' 7"	9' 11"	10' 5"	48	10' 2"	10' 5"	10' 5"	12' 5"	48
Exterior Width	8' 0"	8' 0"	8' 0"	48	8' 0"	8' 0"	8' 0"	8' 0"	8' 0"	90	8' 0"	8' 0"	8' 0"	8' 0"	90
Exterior Width (Slides Out)	10' 1"	N/A	N/A	39	11'	N/A	10'	N/A	11' 0"	78	11"	11' 0"	11' 6"	NA"	39
Interior Height	6' 9"	6' 9"	6' 9"	39	6' 9"	6' 9"	6' 9"	6' 9"	6' 9"	39	6' 9"	6' 9"	6' 9"	8' 2"	39
Fresh Water Capacity (Gal.) (Eastern Built)*	20	26	26	20	48	48	48	48	42	60	48	48	48	90	60
Fresh Water Capacity (Gal.) (Western Built)*	30	42	36	15"	84	90	82	90	84	14"	N/A	80	90	N/A	14"
Gray Waste Water Capacity (Gal.) (Eastern Built)	20	20	20	16'	39	39	40	32.5	39	16'	78	32.5	39	40	16'
Gray Waste Water Capacity (Gal.) (Western Built)	20	20	20	48	32.5	32.5	40	32.5	40	90	N/A	32.5	40	N/A	90
Black Waste Water Capacity (Gal.)(Eastern Built)	20	20	20	39	39	39	40	32.5	39	78	40	32.5	39	40	39
Black Waste Water Capacity (Gal.) (Western Built)	20	20	20	39	39	32.5	40	32.5	40	39	N/A	32.5	40	N/A	39
LP Capacity (lbs.)	20	20	20	20	60	60	60	60	60	60	60	60	60	60	60
Tire Size (Eastern Built)	15"	15"	15"	15"	14"	14"	14"	14"	14"	14"	14"	14"	14"	15"	14"
Awning Size	11'	13'	13"	16'	12'	13'	18'	18'	19'	16'	18"	16'	18'	18'	16'

\*Includes Water Heater

\*\*Specifications, weights, measurements, and capacities above are from model year 2024 and are estimates only for model year 2025. Actual specs, weights, measurements, and capacities may be different for model year 2025 than what is listed above. For the most up-to-date model year 2025 specs, please speak with your local Highland Ridge dealer, visit <http://www.HighlandRidgeRV.com>, and check the yellow sticker on the door of your Highland Ridge RV before purchasing, operating, and towing the RV.

### LOCAL DEALER INFO

TO LEARN MORE VISIT  
[openrangerv.com](http://openrangerv.com)



Highland Ridge RV – Part of the Jayco Family of Companies



Due to continual research and advances, manufacturer reserves the right to change specifications, design, price, and equipment without notice, and assumes no responsibility for any error in the literature. Some items shown are not included as standard or optional equipment.