

SILVERSTAR



Highland
RIDGE RV

Own the Outdoors

TRAVEL TRAILERS & FIFTH WHEELS

SILVERSTAR LITE



FEATURES

STANDARDS

- » 75lb. Full Extension Drawer Guides
- » 8 Cu. Ft. Refrigerator
- » LED Lighting in Ceilings
- » Quick Recovery Gas/Electrical Water Heater
- » 15K A/C with Quiet Residential Return Air
- » Prepped for Observation Camera
- » Keyed-Alike™ Entry & Baggage Doors
- » Solid Swing Down Step (Main Entrance)
- » Power Awning(s) with LED Lighting & Speakers
- » Stainless Steel Under Mount Sinks (Kitchen & Lav)
- » Outside Enclosed Docking Station
- » Motion Light in Pass-through Storage Area
- » Battery Disconnect
- » Solar Prep
- » Queen Mattress (60" x 80")
- » Seamless Countertops Throughout
- » Linoleum Throughout
- » Flush Floor Slides with Vinyl Flooring (No Carpet)
- » PVC Roofing Membrane (15 Year Warranty/ Non-Prorated)
- » Porcelain Toilet
- » Wi-Fi Ready
- » Power Tongue Jack
- » Pet Friendly
- » Pull-Out Pet Dishes
- » MyPillow® Pet Bed
- » No Floor Heat Registers
- » Pet Tie Out with Bottle Opener
- » Pet Kennel Under Bed
- » RidgelINK™ - Bluetooth Control of Slides, Awnings, Lighting, Auto-Levelers & Power Stabilizer Jacks

OPTIONS

- » 50 Amp Service with 2nd A/C Prep (2802, 2804) (Forced 2910)
- » A/C - 2nd A/C, 13.5k BTU Ducted (must choose 50amp option) (2802, 2804, 2910)
- » 10 cu.ft. Residential Refrigerator (12V)
- » BBQ Grill with Bumper Bracket
- » Front Bike Rack
- » Power Front & Rear Stabilizer Jacks
- » Recliners ipo Std. Theater Seats (2804)
- » Table/Chairs ipo Std. Booth (N/A 2102)*
- » Tri-Fold Sofa ipo Std Power Theater Seats (2410, 2802, 2804)
- » U-Lounge Sofa ipo Theater Seats/Booth (2802)
- » 80" Theater Seats ipo L-Lounge (2102)

*N/A with U-Lounge Option

SPECIFICATIONS

	ST2102RB	ST2410RL	HQ2802BS	ST2804RK	ST2910RL
Unloaded Vehicle Weight (lbs.)	5,560	5,450	6,185	6,200	6,815
Dry Hitch Weight (lbs.)	505	515	650	745	855
Gross Vehicle Weight Rating (GVWR)	7,000	7,400	7,450	7,600	8,800
Cargo (Gross)	1,440	1,950	1,265	1,440	1,985
Exterior Length	26' 7"	28' 3"	31' 7"	31' 7"	33' 3"
Exterior Height	11' 2"	11' 2"	11' 1"	11' 1"	11' 1"
Exterior Width	8' 1"	8' 1"	8' 1"	8' 1"	8' 1"
Exterior Width (Slides Out)	11' 4"	11' 4"	11' 4"	11' 4"	13' 0"
Interior Height	6' 9"	6' 9"	6' 9"	6' 9"	6' 9"
Fresh Water (Gal.)*	51	51	51	51	51
Gray Water (Gal.)	58	29	58	58	58
Black Waste Water (Gal.)	29	29	29	29	29
LP Capacity (lbs.)	60	60	60	60	60
Tire Size	15"	15"	15"	15"	15"
Awning Size	15'	15'	20'	20'	10', 11'

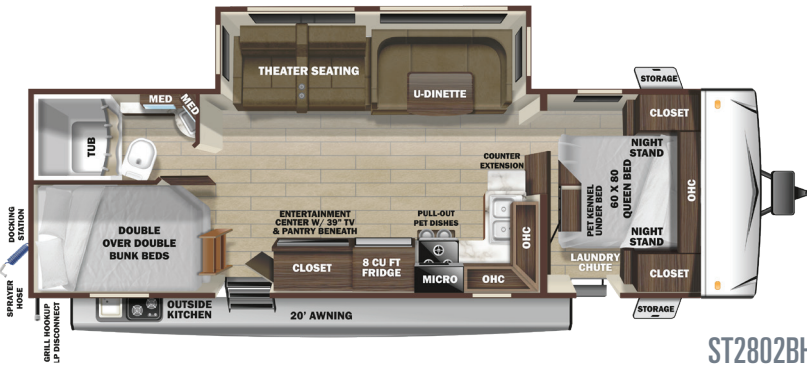
*Includes Water Heater



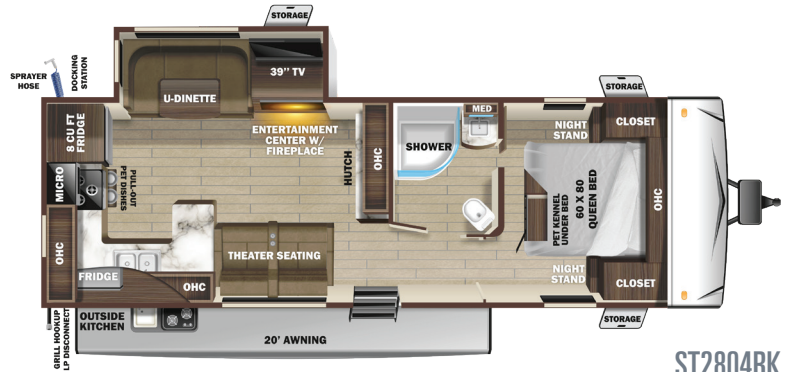
ST2102RB



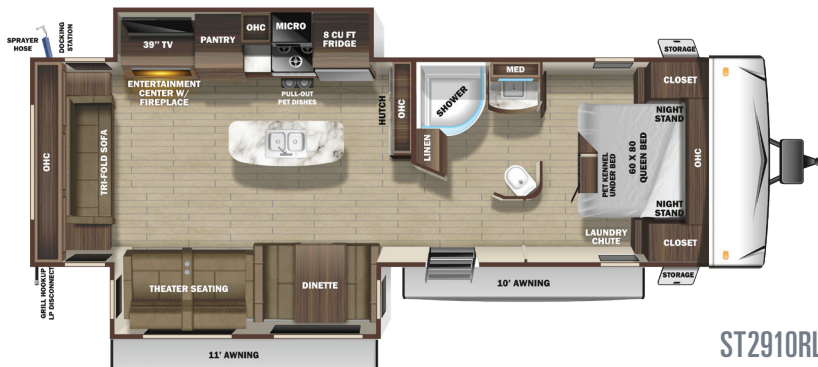
ST2410RL



ST2802BH



ST2804RK



ST2910RL



FEATURES STANDARDS OPTIONS

- » 1/2 Ton Towable (FW)
- » 75lb. Full Extension Drawer Guides
- » 8 cu. ft. Refrigerator
- » LED Lighting in Ceilings
- » Quick Recovery Gas/Electrical Water Heater
- » 15k A/C with Quiet Residential Return Air
- » Prepped for Observation Camera
- » Keyed-Alike™ Entry & Baggage Doors
- » Solid Swing Down Steps (Main Entrance)
- » Power Awning(s) with LED Speakers & Lighting
- » Stainless Steel Appliances
- » Stainless Steel Under Mount Sinks (Kitchen & Lav)
- » Outside Enclosed Docking Station
- » Motion Lighting in Pass-through Storage
- » Battery Disconnect
- » Solar Prep
- » Queen Mattress (60" x 80")
- » Solid Surface Kitchen Countertops & Seamless Tops Elsewhere
- » Linoleum Throughout Main Living Areas

- » Flush Floor Slides with Vinyl Flooring (No Carpet)
- » Hardwood Cabinet Doors & Drawers
- » 50 Amp Service
- » PVC Roofing Membrane (15 Year Warranty/Non-Prorated)
- » Porcelain Toilet
- » Walk Around Queen Bed with Best in Class Headroom (FW)
- » Pet Friendly
- » No Heat Registers in Floor
- » Pull-Out Pet Dishes
- » MyPillow® Pet Bed
- » Pet Tie Out with Bottle Opener
- » Pet Kennel Under Bed (TT)
- » Power Tongue Jack (TT)
- » Power Landing Gear & Stabilizer Jacks (FW)
- » Wi-Fi Ready
- » 3000lb. Tow Hitch (FW)
- » RidgeLINK™ - Bluetooth Control of Slides, Awnings, Lighting, Auto-Levelers & Power Stabilizer Jacks

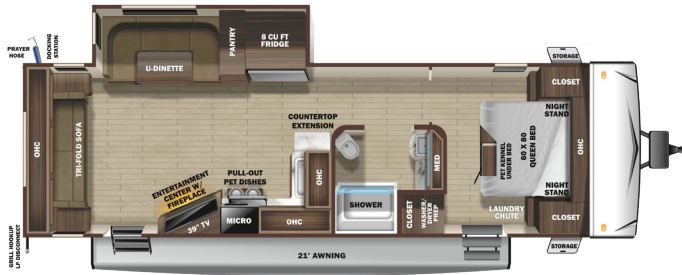
- » A/C - 2nd A/C, 13.5k BTU Ducted
- » BBQ Grill with Bumper Bracket
- » Front Bike Rack (TT)
- » Power Front & Rear Stabilizer Jacks (TT)
- » Hitch/Pinbox Turning Point (FW)
- » 4 Point Leveling System (FW)
- » 10 cu.ft. Residential Refrigerator (12V)
- » Recliners ipo Std. Theater Seats (280)
- » U-Lounge ipo Std. Theater Seats/Booth (TTs - 275, 312) (FWs – 250, 295, 332, 335)
- » Table/Chairs ipo Std. Booth*
- » Tri-Fold Sofa ipo Std Power Theater Seats (TTs - 312) (FWs – 250, 280, 295)
- » 70" Theater Seats ipo Tri-Fold (260)
- » King Bed

*N/A with U-Lounge Option

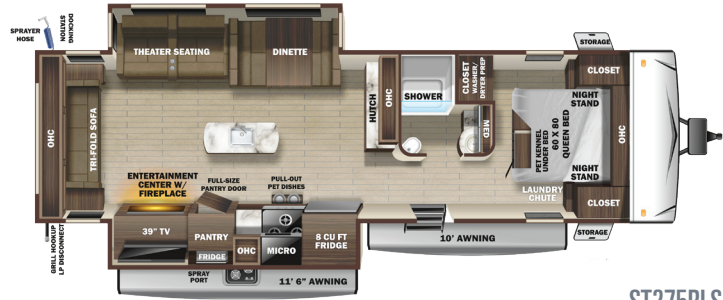
SPECIFICATIONS

	ST260RLS	ST275RLS	ST312BHS	SF250RES	SF280RKS	SF291RLS	SF295BHS	SF332RLS	SF335MBH
Unloaded Vehicle Weight (lbs.)	6,150	7,155	8,000	7,440	7,650	8,050	8,085	8,920	9,610
Dry Hitch Weight (lbs.)	740	875	995	1,230	1,210	1,520	1,315	1,565	1,615
Gross Vehicle Weight Rating (GVWR)	7,400	8,995	9,735	9,200	9,760	9,995	9,995	10,995	11,500
Cargo (Gross)	1,250	1,840	1,735	1,760	2,110	1,945	1,910	2,075	1,890
Exterior Length (Pin to Rear)	31' 3"	33' 9"	36' 11"	29' 4"	29' 10"	31' 11"	34' 0"	34' 6"	37' 3"
Exterior Height	11' 1"	11' 3"	11' 3"	12' 4"	12' 4"	12' 4"	12' 6"	12' 11"	12' 5"
Exterior Width	8' 1"	8' 1"	8' 1"	8' 1"	8' 1"	8' 1"	8' 1"	8' 1"	8' 1"
Exterior Width (Slides Out)	11' 4"	13' 0"	14' 2"	11' 4"	11' 4"	13' 0"	11' 4"	13' 0"	13' 0"
Interior Height (Upper Deck)	-	-	-	6' 9"	6' 9"	6' 9"	6' 9"	6' 4"	6' 9"
Interior Height (Overall)	6' 9"	6' 9"	6' 9"	7' 11"	7' 11"	7' 11"	7' 11"	8' 1"	7' 11"
Fresh Water (Gal.)*	51	51	51	51	51	51	51	51	51
Gray Water (Gal.)	29	58	76	58	58	58	58	58	58
Black Waste Water (Gal.)	29	29	29	29	29	29	29	29	29
LP Capacity (lbs.)	60	60	60	60	60	60	60	60	60
Tire Size	15"	15"	15"	15"	15"	15"	15"	15"	15"
Awning Size	21'	11.5', 10'	9', 11'	20'	20'	9', 11'	21'	18'	19'

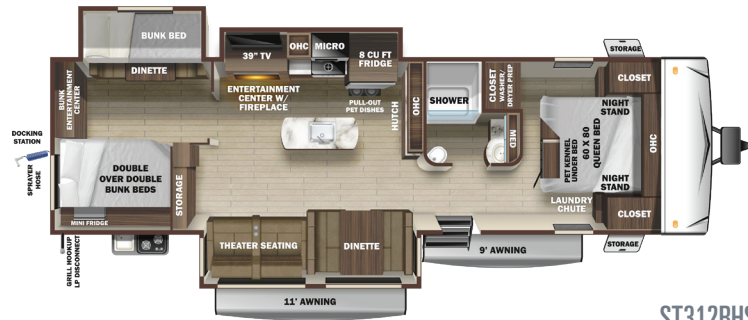
*Includes Water Heater



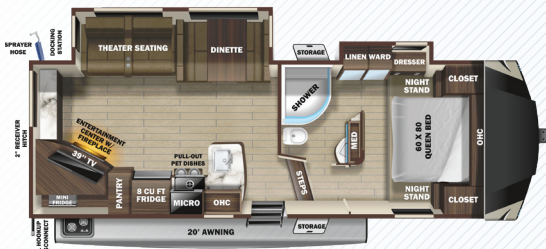
ST260RLS



ST275RLS



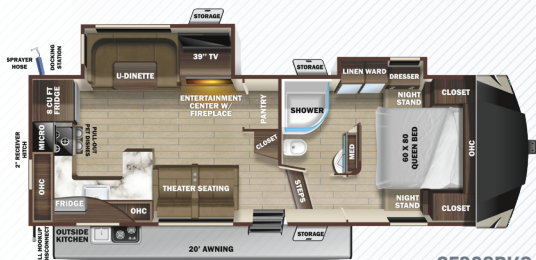
ST312BHS



SF250RES



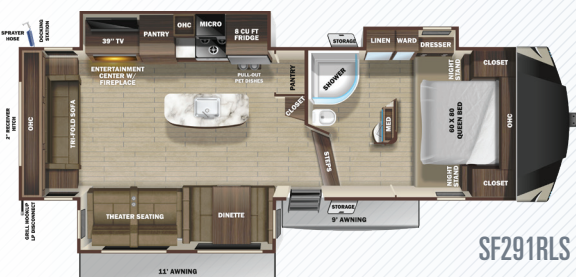
SF295BHS



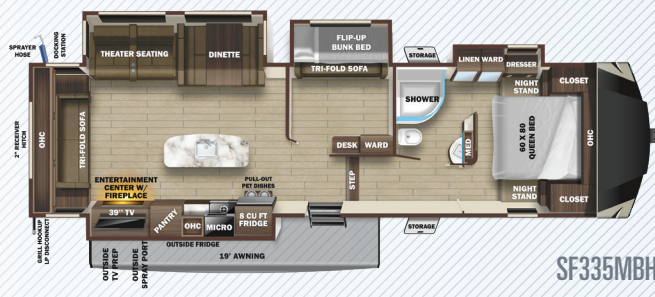
SF280RS



SF332RLS



SF291RLS



SF335MBH



FEATURES

STANDARDS

OPTIONS

- » 100" Wide Body Frame
- » 76" X 28" Entrance Door with Euro Latch & Screen Shot Screen Door
- » ACCU-SLIDETM Slide System (42" Deep with 4-Corner Compression)
- » 15K A/C Quiet Residential Return Air – Main Living
- » 13.5K A/C Quiet Residential Return Air – Bedroom
- » Nitrogen Filled Tires with Aluminum Rims
- » Frameless Windows
- » Solid Swing Down Step
- » No Carpet in Kitchen & Living Areas
- » Patented Flush Floor Slides with Vinyl Flooring (No Carpet)
- » PVC Roofing Membrane (15 Year Warranty/ Non-Prorated)
- » Power Awning with LED Light, FLXguard®, Speakers, & Bluetooth Control
- » Observation Camera Prep
- » Solar Prep
- » Keyed-Alike™ Entry & Baggage Doors
- » Wall Controlled Power Vent (Kitchen) (FW)

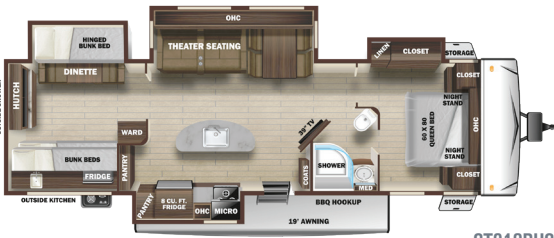
- » Power Front & Rear Stabilizers (TT)
- » Washer/Dryer Prep (Most Models)
- » 75lb. Ball Bearing Drawer Guides
- » Roof Ladder
- » Battery Disconnect
- » 84" Slide-Out Height (FW)
- » Night Roller Shades
- » Large Freestanding Range & Oven (FW)
- » 4 or 6 Point Auto Leveling with JT Strong Arm Stabilizers (FW)
- » French Door to Bedroom
- » LED Lighting in Ceiling
- » Fiberglass Front Cap with LED Lights
- » Wired for Wi-Fi
- » Motion Detector Lights in Bedroom & Hallway
- » RidgeLINK™ - Bluetooth Control of Slides, Awnings, Lighting, Auto-Levelers & Power Stabilizer Jacks
- » Pet Friendly
- » Pet Bed Mat

- » Heat Pump (Main A/C)
- » BBQ Grill
- » Dual Pane Windows
- » Fan - Wall Control Power Vent in Kitchen (TT)
- » Fireplace - Wall Mount (310, 328)
- » King Bed ipo Std. Queen Bed (N/A 310, 284, 376, 427)
- » Observation Camera
- » Rear Storage Tray (TT)
- » Generator Prep - LP (FW)
- » 18 cu. ft. Residential Refrigerator (N/A 323, 328)
- » 18 cu. ft. Gas/Electric Refrigerator (FW)
- » 21 cu. ft. Residential Refrigerator (All FWs & 328, 322, 323)
- » 32" TV - Bunk Room (371, 374, 427, 310, 328)
- » 32" TV - Main Bedroom (FW, Std. 384)
- » 32" TV - Outside Kitchen
- » U-Lounge ipo Std. Theater Seats/Table (310, 328, 376, 374, 427)
- » Sofa with Table & Chairs (427)
- » Pinbox, Trailair Air Ride (FW)

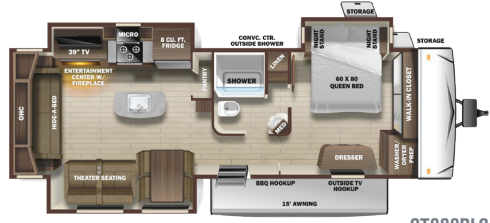
SPECIFICATIONS

	ST310BHS	ST322RLS	ST323RLS	ST328BHS	SF284RLS	SF313RKS	SF314RLS	SF317MBH	SF373RBS	SF374BHS	SF375RDS	SF376FBH	SF378RBS	SF384RLS	SF427BHS
Unloaded Vehicle Weight (lbs.)	9,270	9,070	8,995	9,660	10,005	10,725	10,640	12,530	12,876	12,450	12,195	12,295	12,645	11,800	12,830
Dry Hitch Weight (lbs.)	1,285	1,120	1,195	1,150	1,665	1,715	1,825	2,270	2,366	2,235	2,505	2,535	2,420	2,140	1,985
Gross Vehicle Weight Rating (GVWR)	11,500	11,500	11,400	11,300	12,500	14,130	13,250	16,470	15,500	15,500	15,000	15,000	15,500	15,500	15,500
Cargo (Gross)	2,230	2,430	2,445	1,640	2,495	3,405	2,610	3,940	2,624	3,050	2,805	2,705	2,855	3,700	2,670
Exterior Length (Pin to Rear)	37' 4"	37' 8"	37' 8"	38' 0"	33' 1"	35' 6"	35' 5"	41' 0"	41' 7"	39' 8"	40' 0"	41' 0"	41' 9"	39' 2"	39' 6"
Exterior Height	11' 8"	11' 4"	11' 6"	11' 8"	12' 9"	13' 0"	13' 0"	13' 1"	13' 1"	13' 4"	13' 0"	13' 2"	13' 1"	13' 1"	13' 0"
Exterior Width	8' 4"	8' 4"	8' 4"	8' 4"	8' 4"	8' 4"	8' 4"	8' 4"	8' 4"	8' 4"	8' 4"	8' 4"	8' 4"	8' 4"	8' 4"
Exterior Width (Slides Out)	13' 11"	14' 3"	14' 1"	14' 11"	13' 10"	14' 3"	14' 3"	14' 1"	13' 6"	14' 11"	13' 7"	14' 0"	13' 6"	13' 1"	13' 9"
Interior Height (Overall)	7' 0"	7' 0"	7' 0"	7' 0"	8' 2"	8' 2"	8' 2"	8' 2"	8' 2"	8' 2"	8' 2"	8' 2"	8' 2"	8' 2"	8' 2"
Interior Height (Upper Deck)	-	-	-	-	6' 4"	6' 4"	6' 4"	6' 4"	6' 4"	6' 4"	6' 4"	6' 4"	6' 4"	6' 4"	6' 4"
Fresh Water (Gal.)*	49	56	50	50	85	85	85	85	85	85	85	85	85	85	85
Gray Water (Gal.)	66	114	114	99	97	97	97	80	80	132	114	82	80	114	80
Black Waste Water (Gal.)	33	31	33	66	40	40	40	40	80	80	40	82	40	40	80
LP Capacity (lbs.)	60	60	60	60	60	60	60	60	60	60	60	60	60	60	60
Tire Size	16"	16"	16"	16"	16"	16"	16"	16"	16"	16"	16"	16"	16"	16"	16"
Awning Size	19'	14', 11'	15'	11', 9'	16'	16', 11'	11', 16'	11', 16'	14', 16'	16', 11'	16'	19'	14', 16'	19'	16', 13'

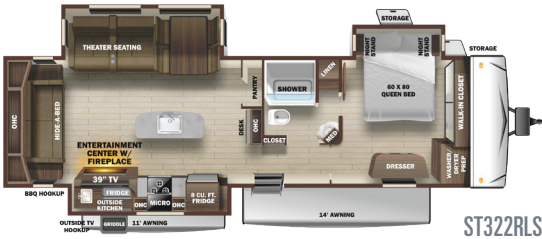
*Includes Water Heater



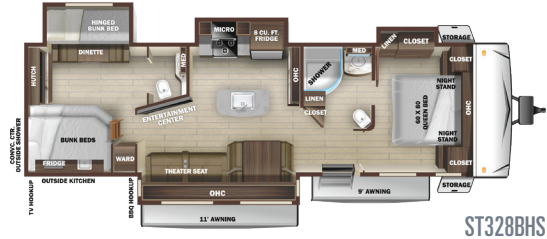
ST310BHS



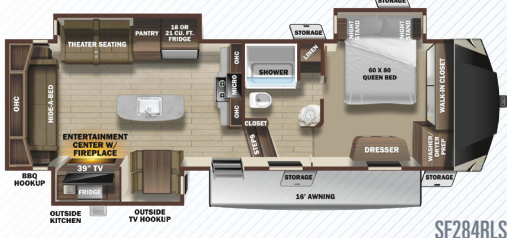
ST323RLS



ST322RLS



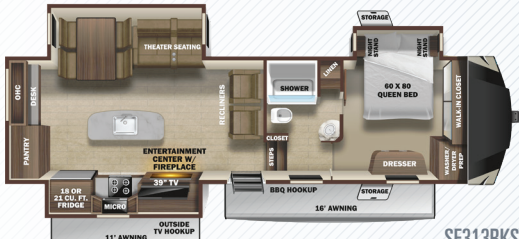
ST328BHS



SF284RLS



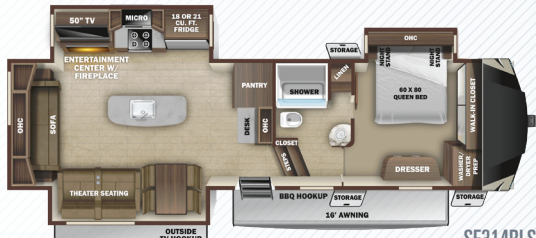
SF374BHS



SF313RKS



SF375RDS



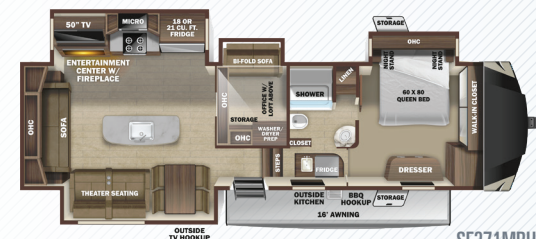
SF314RLS



SF376FBH



SF378RBS



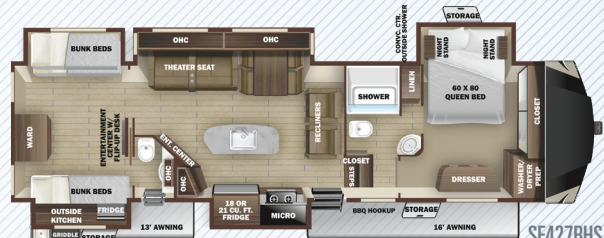
SF371MBH



SF384RLS



SF373RBS



SF427BHS



SILVERSTAR LITE
TRAVEL TRAILERS



SILVERSTAR LIMITED
TRAVEL TRAILERS & FIFTH WHEELS
Fifth Wheel Not Shown



SILVERSTAR
TRAVEL TRAILERS & FIFTH WHEELS



We stand behind our products. At Highland Ridge RV, we are one of the few manufacturers that have a 3-Year Limited Structural Warranty.

**MORE ROOM
LESS WEIGHT**

This is our mission at Highland Ridge RV. It drives us to innovate and revolutionize the RV industry and it's why our products are 10 - 15% lighter than the competition.



Our Pet Friendly units offer inoleum throughout the main living areas and pet bed mats.



**ZERO DEGREE
TESTED**

We put our products into a zero degree chamber for five hours with thermometers placed in key areas throughout the unit. The results speak for themselves.

Your Silverstar Dealer:



For more information visit us at:
www.HighlandRidgeRV.com

Due to continual research and advances, manufacturer reserves the right to change specifications, design, price, and equipment without notice, and assumes no responsibility for any error in the literature. Some items shown are not included as standard or optional equipment.