

2021 TRAVEL TRAILERS & FIFTH WHEELS



Highland
RIDGE RV

Own the Outdoors



FULL-PROFILE TRAVEL TRAILERS



Open Range OT330BHS featuring white kitchen cabinetry, residential vinyl flooring throughout and an optional u-lounge sofa



Single basin under-mount sink with high rise faucet and pull down sprayer and solid surface countertops



Solid surface countertops and shower surround



80" Queen bed with abundant bedroom storage and washer/dryer prep

LIVE IN THE MOMENT, NO MATTER WHERE LIFE TAKES YOU

Planning your next adventure? Take us along for the ride! The Open Range travel trailer is constructed with space and durability in mind. With a 100" wide body, flush floor slides and a PVC roofing membrane, this travel trailer has comfort you can count on. Its stylish interiors coupled with its list of standard amenities make this travel trailer the perfect choice. Features include a power awning with LED lighting and integrated speakers, Keyed-Alike™ entry and baggage doors, a large freestanding range and oven and much more. These units are all wired for Wi-Fi and feature our Rid-geLINK™ Bluetooth system, for convenience and connection. Live in the moment with the Open Range travel trailer.

TRAVEL TRAILER CONSTRUCTION

PVC ROOFING MEMBRANE

- Strongest RV roof on the market
- 15 year limited warranty (non-prorated)
- Quality from the top down

- ▶ NO CHALKING
- ▶ NO STREAKING
- ▶ NO SPOTTING
- ▶ NO TREATMENTS REQUIRED – EVER!

Learn More →

ROOF CONSTRUCTION

- Double batten insulation with a layer of radiant foil
- Features heat reflecting properties that keep your coach cooler in the summer & warmer in the winter

100" WIDE BODY FRAME

- More living space for you to enjoy

DOORS & LOCKS

- 76" tall entrance door with Euro latch & screen shot screen door
- Solid swing-down steps with 13" deep tread top step
- Full-width entrance doors
- Built-in screen doors & integrated window shades
- Everything is Keyed-Alike™ so all you need is 1 key. No more fumbling to find the right key.

SLIDEOUTS

- Norco ACCU-SLIDES™ with 4 corner compression
- 72" tall & 42" deep
- Flush floor slides with residential vinyl flooring

FORCED AIR HEATED UNDERBELLY

- Enclosed & insulated
- Calculated R38 floor
- Laminated 2" block foam floors with reflective foil

LOCK ARMS ON JACK LEGS

- Built in anti-rocking motion

BLACK TANK MONITORING

Horst black tank monitor probes allow for a continuous accurate reading of black tank levels



ADDITIONAL FEATURES

- ▶ WIRED FOR WIFI
- ▶ SELF-ADJUSTING BRAKES WITH BRASS BUSHINGS & WET BOLTS
- ▶ NORCO™ 5.1 STABILIZER SYSTEM WITH BAL™ LOCK ARMS

POWER AWNING WITH FLXguard®



STANDARDS

- » 100" Wide Body Frame
- » 13,500 BTU A/C Quiet Residential Return Air – Bedroom
- » 15,000 BTU A/C Quiet Residential Return Air – Main Living
- » 75lb. Full Extension Drawer Guides
- » 76" x 28" Entrance Door with Euro Latch & Screen Shot Screen Door
- » ACCU-SLIDE™ Slide System (42" Deep with 4-Corner Compression)
- » Battery Disconnect
- » Enclosed Outside Docking Station with Black Tank Flush
- » Equa-Flex® Axle Suspension
- » Flush Floor Slides with Vinyl Flooring (No Carpet)
- » Frameless Windows
- » Hardwood Cabinet Doors
- » Keyed-Alike™ Entry & Baggage Doors
- » Large Oven & 3-Burner Range with Glass Cover
- » LED HDTV
- » LED Lighting
- » Night Roller Shades
- » Norco™ 5.1 Stabilizer System with BAL™ Lock Arms
- » Observation Camera Prep
- » Painted Fiberglass Front Cap with LED Lighting
- » Power Awning with LED Lighting, FLXguard®, Speakers, & Bluetooth® Control
- » Power Front & Rear Stabilizers
- » PVC Roofing Membrane (15 Year Limited Warranty/Non-Prorated)
- » Residential Vinyl Flooring Throughout
- » RidgeLINK™ - Bluetooth® Control of Slides & Lighting
- » Roof Ladder
- » Seamless Solid-Surface Kitchen Countertops
- » Self-Adjusting Electric Breaks
- » Solar Prep
- » Solid Swing-Down Entry Steps
- » Stainless Steel Appliances
- » Stainless Steel Under-Mount Kitchen Sink
- » Theater Seats with Heat & Massage
- » Tinted Safety-Glass Windows
- » USB Ports in Master Bedroom
- » Washer/Dryer Prep
- » Wi-Fi Ready

OPTIONS

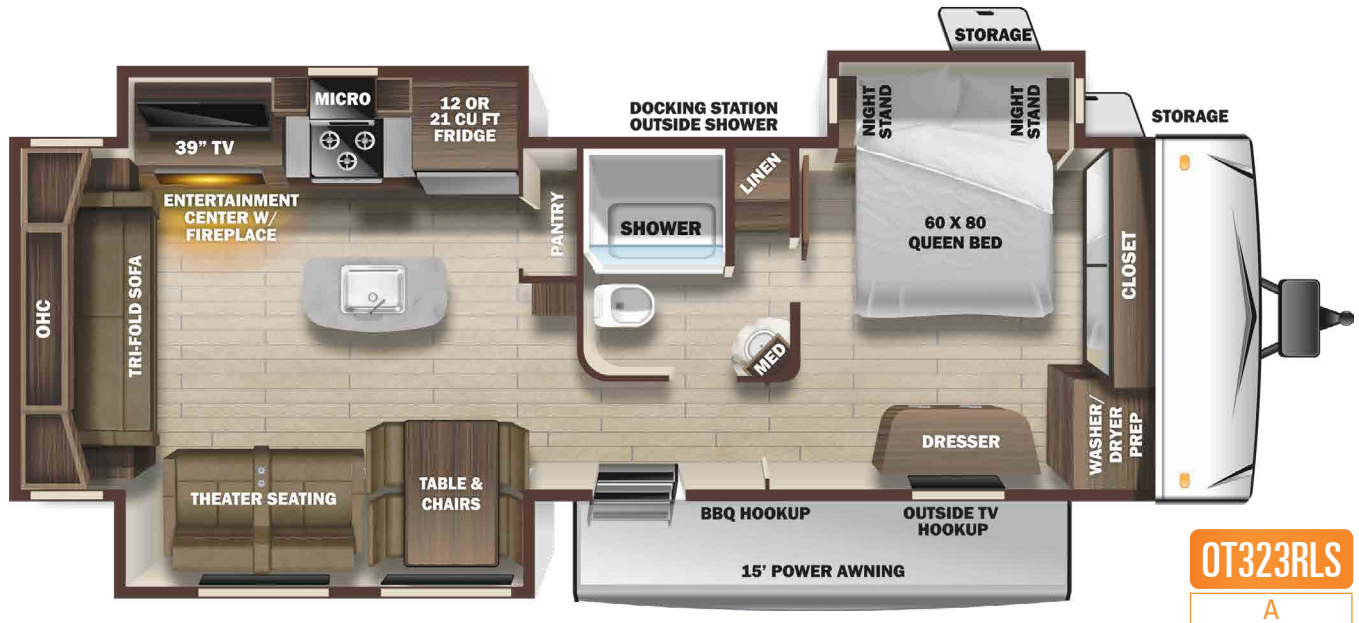
- » 18 cu. ft. Gas/Electric Refrigerator
- » 21 cu. ft. Residential Refrigerator
- » 32" TV - Bunk Room (330, 338)
- » 32" TV - Outside Entertainment
- » BBQ Grill
- » Dual Pane Windows
- » Fan - Wall Control Power Vent in Bathroom
- » Fan - Wall Control Power Vent in Kitchen
- » Fireplace - Wall Mount (330)
- » Folding Dinette Chairs (2) (N/A with U-Lounge Option)
- » Heat Pump (Main A/C)
- » King Bed ipo Queen Bed (N/A 330)
- » Observation Camera
- » Rear Storage Tray
- » Slideout Awnings
- » TV Trays (Only Available with Theater Seating)
- » U-Lounge ipo Theater Seats & Table (330, 338)

Learn more about our standard features and full options packages at HighlandRidgeRV.com

SPECIFICATIONS	0T322RLS	0T323RLS	0T330BHS	0T338BHS
Unloaded Vehicle Weight (lbs.)	9,530	8,970	9,770	10,110
Dry Hitch Weight (lbs.)	1,250	1,238	1,230	1,060
Gross Vehicle Weight Rating (GVWR)	11,500	11,400	11,500	11,700
Cargo (Gross)	1,970	2,430	1,730	1,590
Exterior Length (Overall)	37' 10"	37' 11"	39' 4"	40' 0"
Exterior Height	11' 9"	11' 9"	11' 11"	11' 8"
Exterior Width	8' 4"	8' 4"	8' 4"	8' 4"
Exterior Width (Slides Out)	13' 11"	14' 2"	13' 11"	15' 1"
Interior Height (Overall)	7' 0"	7' 0"	7' 0"	7' 0"
Fresh Water Capacity (Gal.)*	47	47	47	47
Gray Waste Water Capacity (Gal.)	114	114	84	66
Black Waste Water Capacity (Gal.)	31	33	33	66
LP Capacity (lbs.)	60	60	60	60
Tire Size	16"	16"	16"	16"
Awning Size	11' 6", 14'	15'	19'	11' 6", 11' 6"

*Includes Water Heater

TRAVEL TRAILER FLOORPLANS



OPTIONS



KING BED
OPTION

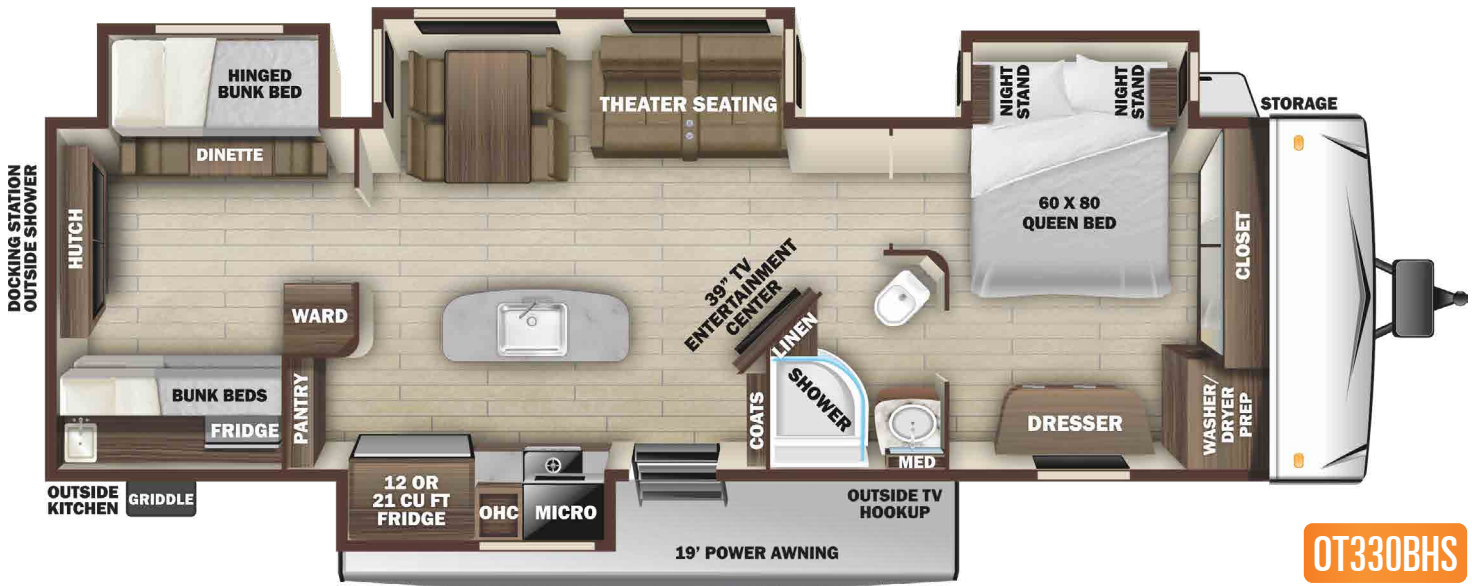
A



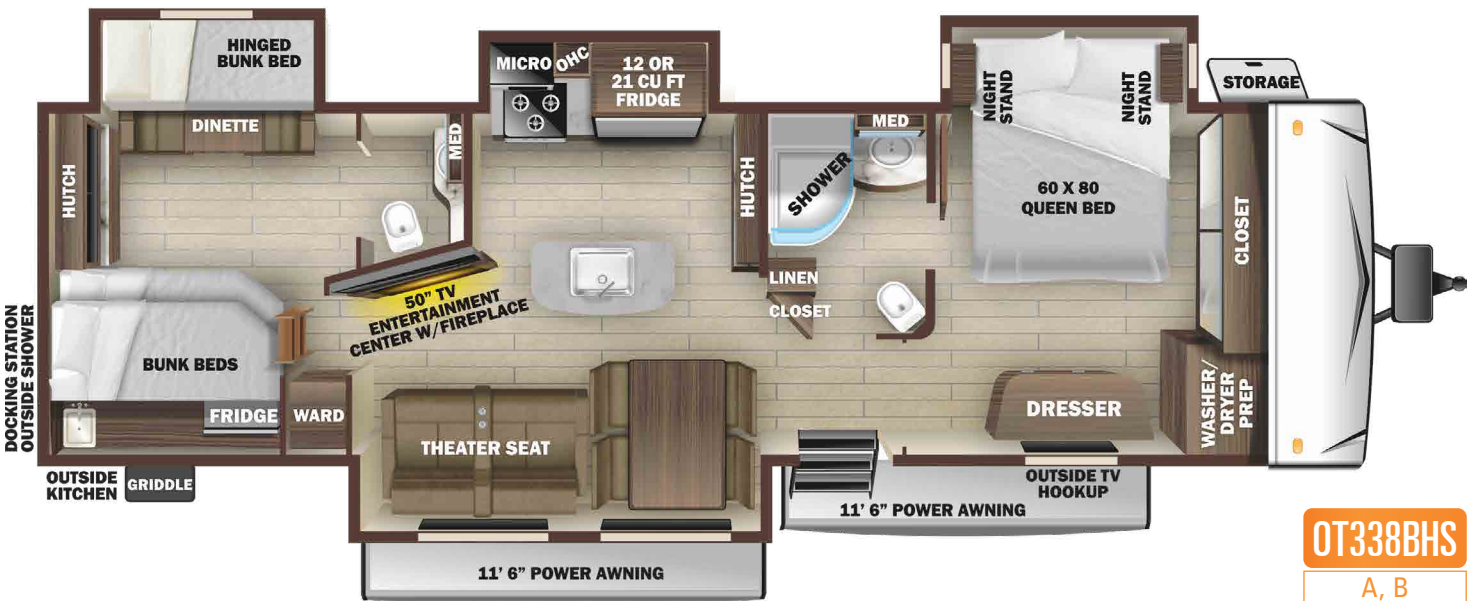
U-LOUNGE
OPTION

B

TRAVEL TRAILER FLOORPLANS



OT330BHS
B



OT338BHS
A, B

OPTIONS



KING BED OPTION

A



U-LOUNGE OPTION

B



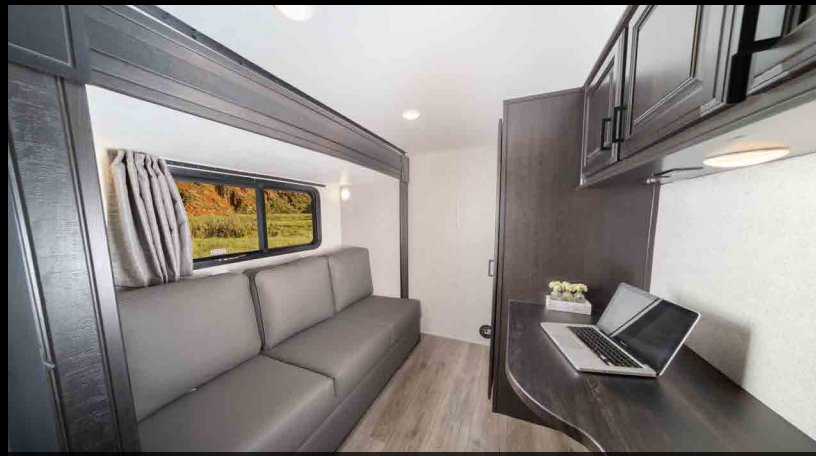
FULL-PROFILE FIFTH WHEELS



Open Range OF371MBH featuring white kitchen cabinetry, hardwood crown molding, solid surface kitchen countertops and a 3.75 cu. ft. freestanding oven with 4-burner range



Optional king bed with generous bedroom storage



Spacious bunkroom with sleeping loft above

THE ULTIMATE HOME AWAY FROM HOME


Make owning the outdoors a lifestyle in the Open Range fifth wheel. This fifth wheel has enough sleeping and storage space for the whole family. Along with luxurious interior amenities such as an updated decor package and a large freestanding range and oven, this lineup comes standard with construction features including LevelLoc™ - our 4 or 6 point auto-leveling and JT's Strong Arm™ stabilizer package that provides a strong foundation. We are giving you style, innovation and reliability all in one. Enjoy your home on the road with the Open Range fifth wheel lineup.

FIFTH WHEEL CONSTRUCTION

PVC ROOFING MEMBRANE

- Strongest RV roof on the market
- 15 year limited warranty (non-prorated)
- Quality from the top down

- ▶ NO CHALKING
- ▶ NO STREAKING
- ▶ NO SPOTTING
- ▶ NO TREATMENTS REQUIRED – EVER!

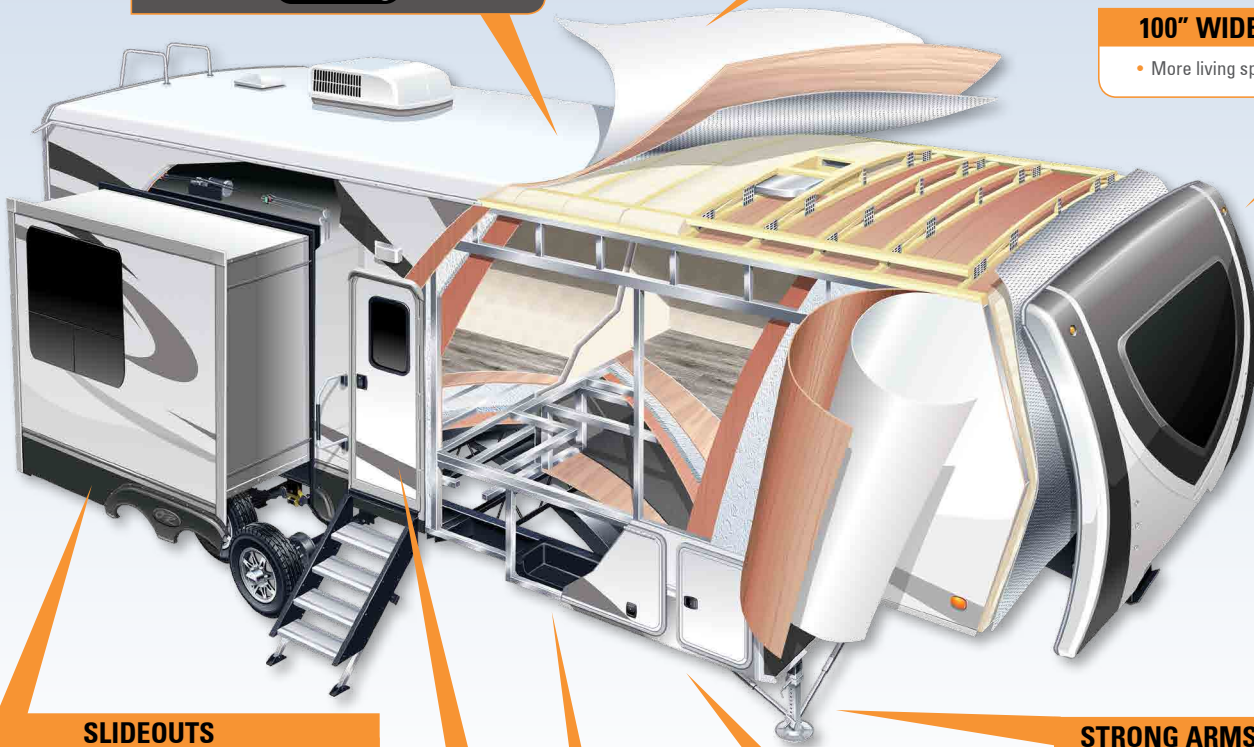
Learn More 

ROOF CONSTRUCTION

- Double batten insulation with a layer of radiant foil
- Features heat reflecting properties that keep your coach cooler in the summer & warmer in the winter

100" WIDE BODY FRAME

- More living space for you to enjoy



SLIDEOUTS

- Norco ACCU-SLIDES™ with 4 corner compression
- 84" tall & 42" deep
- Flush floor slides with residential vinyl flooring

DOORS & LOCKS

- 76" tall entrance door with Euro latch & screen shot screen door
- Solid swing-down steps with 13" deep tread top step
- Full-width entrance doors
- Built-in screen doors & integrated window shades
- Everything is Keyed-Alike™ so all you need is 1 key. No more fumbling to find the right key.

STRONG ARMS ON JACK LEGS

- Built in anti-rocking motion

FORCED AIR HEATED UNDERBELLY

- Enclosed & insulated
- Calculated R38 floor
- Laminated 2" block foam floors with reflective foil

BLACK TANK MONITORING

Horst black tank monitor probes allow for a continuous accurate reading of black tank levels



OUR AUTOMATIC LEVELERS PAIRED WITH JT'S STRONG ARMS® CREATE A STRONG, RELIABLE, BASE FOR OUR FIFTH WHEELS.

POWER AWNING WITH FLXguard®



STANDARDS

- » 100" Wide Body Frame
- » 13,500 BTU A/C Quiet Residential Return Air – Bedroom
- » 15,000 BTU A/C Quiet Residential Return Air – Main Living
- » 2" Receiver Hitch
- » 75lb. Full Extension Drawer Guides
- » 76" x 28" Entrance Door with Euro Latch & Screen Shot Screen Door
- » 84" Slideout Height
- » ACCU-SLIDE™ Slide System (42" Deep with 4-Corner Compression)
- » Battery Disconnect
- » Cutting Board & Sink Strainer
- » Day & Night Roller Shades
- » Equa-Flex® Axle Suspension
- » Flush Floor Slides with Vinyl Flooring (No Carpet)
- » Frameless Windows
- » Hardwood Valances, Slideout Fascia, Crown Molding & Ceiling Soffit
- » Keyed-Alike™ Entry & Baggage Doors
- » Large Freestanding Oven & 4-Burner Range
- » LED HDTV
- » LED Lighting
- » LevelLoc™ - 4 or 6 Point Auto Leveling with JT's Strong Arm™ Stabilizers
- » Motion Detector Lights in Bedroom & Hallway
- » Observation Camera Prep
- » Painted Fiberglass Front Cap with LED Lighting
- » Power Awning with LED Lighting, FLXguard®, Speakers, & Bluetooth® Control
- » PVC Roofing Membrane (15 Year Limited Warranty/Non-Prorated)
- » Raised Panel Hardwood Cabinet Doors
- » Residential Vinyl Flooring throughout Main Living Areas
- » RidgeLINK™ - Bluetooth® Control of Slides & Lighting
- » Roof Ladder
- » Seamless Solid-Surface Kitchen Countertops
- » Self-Adjusting Electric Breaks
- » Solar Prep
- » Solid Swing-Down Entry Steps
- » Stainless Steel Appliances
- » Stainless Steel Under-Mount Kitchen Sink
- » Theater Seats with Heat & Massage
- » Tinted Safety-Glass Windows
- » USB Ports in Master Bedroom
- » Wall Controlled Power Vent (Kitchen)
- » Washer/Dryer Prep (Most Models)
- » Wi-Fi Ready

OPTIONS

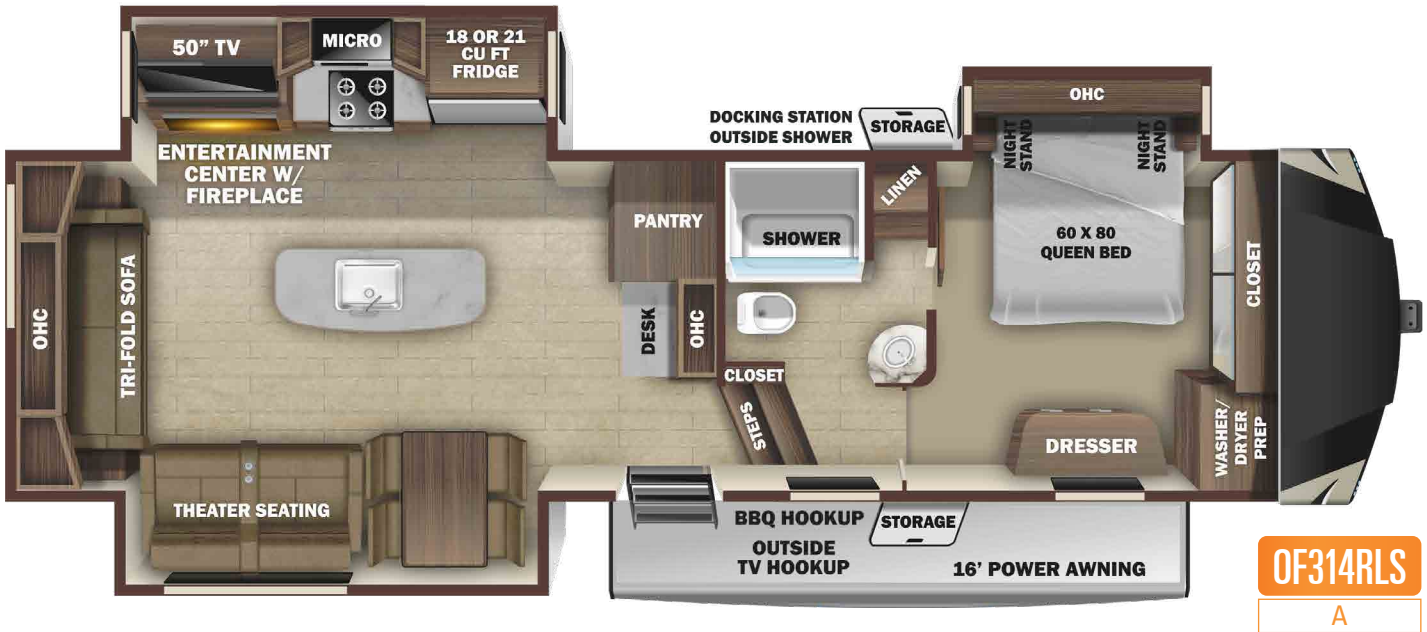
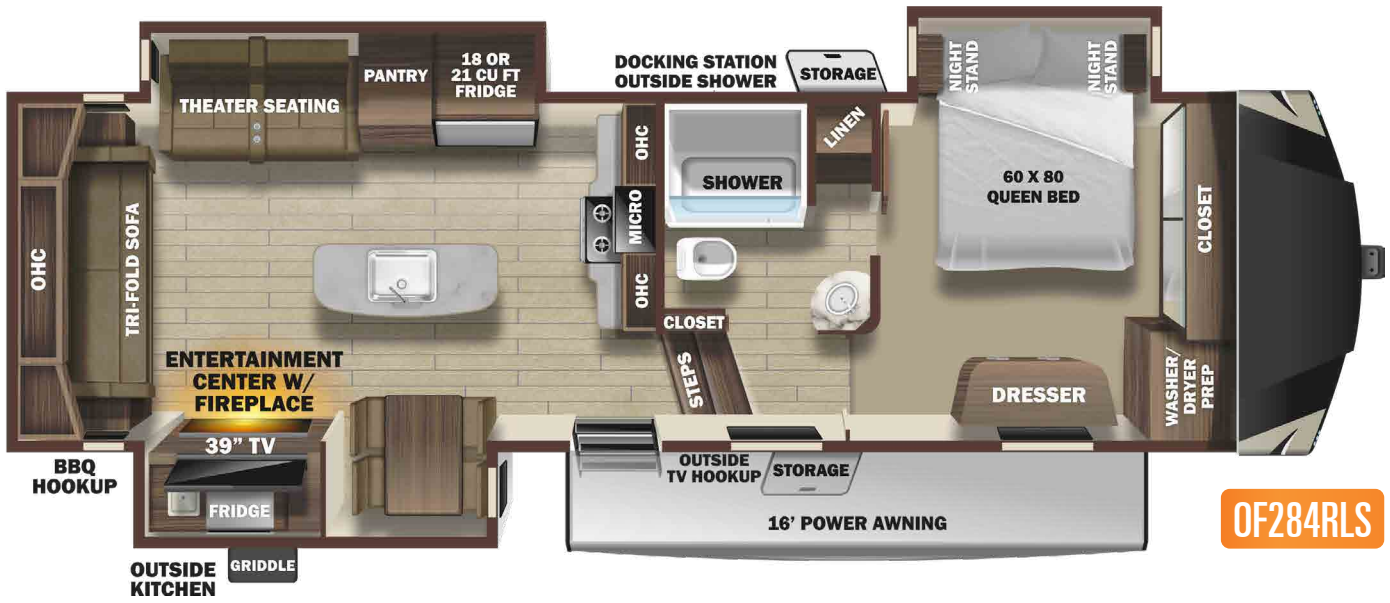
- » 18 cu. ft. Gas/Electric Refrigerator
- » 21 cu. ft. Residential Refrigerator
- » 32" TV - Bunk Room (371, 374, 427)
- » 32" TV - Main Bedroom
- » BBQ Grill
- » Dual Pane Windows
- » Fan - Wall Control Power Vent in Bathroom
- » Folding Dinette Chairs (2) (N/A with U-Lounge Option)
- » Generator Prep - LP
- » Heat Pump (Main A/C)
- » King Bed ipo Queen Bed (N/A 284, 376, 427)
- » Observation Camera
- » Pinbox, Trailair® Ride
- » Slideout Awnings
- » Sofa with Table & Chairs (427)
- » TV Trays (Only Available with Theater Seating)
- » U-Lounge ipo Theater Seats & Table (374, 376, 427)

Learn more about our standard features and full options packages at HighlandRidgeRV.com

SPECIFICATIONS	0F204RLS	0F314RLS	0F427BHS	0F374BHS	0F376FBH	0F371MBH	0F378RBS	0F373RBS
Unloaded Vehicle Weight (lbs.)	10,285	10,710	12,745	12,545	12,405	12,520	12,795	12,910
Dry Hitch Weight (lbs.)	1,795	1,860	2,280	2,520	2,605	2,245	2,490	2,310
Gross Vehicle Weight Rating (GVWR)	12,500	13,250	15,500	15,500	15,000	16,470	15,500	15,500
Cargo (Gross)	2,215	2,540	2,755	2,955	2,595	3,950	2,705	2,590
Exterior Length (Pin to Rear)	33' 3"	35' 3"	39' 8"	39' 8"	40' 8"	41' 4"	41' 7"	41' 8"
Exterior Length (Overall)	34' 4"	36' 9"	41' 0"	41' 1"	42' 3"	42' 10"	43' 0"	43' 0"
Exterior Height	12' 11"	13' 1"	13' 2"	13' 2"	13' 1"	13' 1"	13' 2"	13' 1"
Exterior Width	8' 4"	8' 4"	8' 4"	8' 4"	8' 4"	8' 4"	8' 4"	8' 4"
Exterior Width (Slides Out)	14' 10"	14' 10"	13' 10"	14' 11"	13' 10"	14' 1"	13' 7"	13' 7"
Interior Height (Upper Deck)	6' 5"	6' 5"	6' 5"	6' 5"	6' 5"	6' 4"	6' 5"	6' 5"
Interior Height (Overall)	8' 2"	8' 2"	8' 2"	8' 2"	8' 2"	8' 2"	8' 2"	8' 2"
Fresh Water Capacity (Gal.)*	85	85	85	85	85	85	85	85
Gray Waste Water Capacity (Gal.)	97	97	80	132	82	40	80	80
Black Waste Water Capacity (Gal.)	80	40	80	80	82	80	40	80
LP Capacity (lbs.)	60	60	60	60	60	60	60	60
Tire Size	16"	16"	16'	16"	16"	16"	16"	16"
Awning Size	16'	16'	13', 16'	11' 6", 15'	19'	16'	16', 14'	16', 14'

*Includes Water Heater

FIFTH WHEEL FLOORPLANS



OPTIONS



A

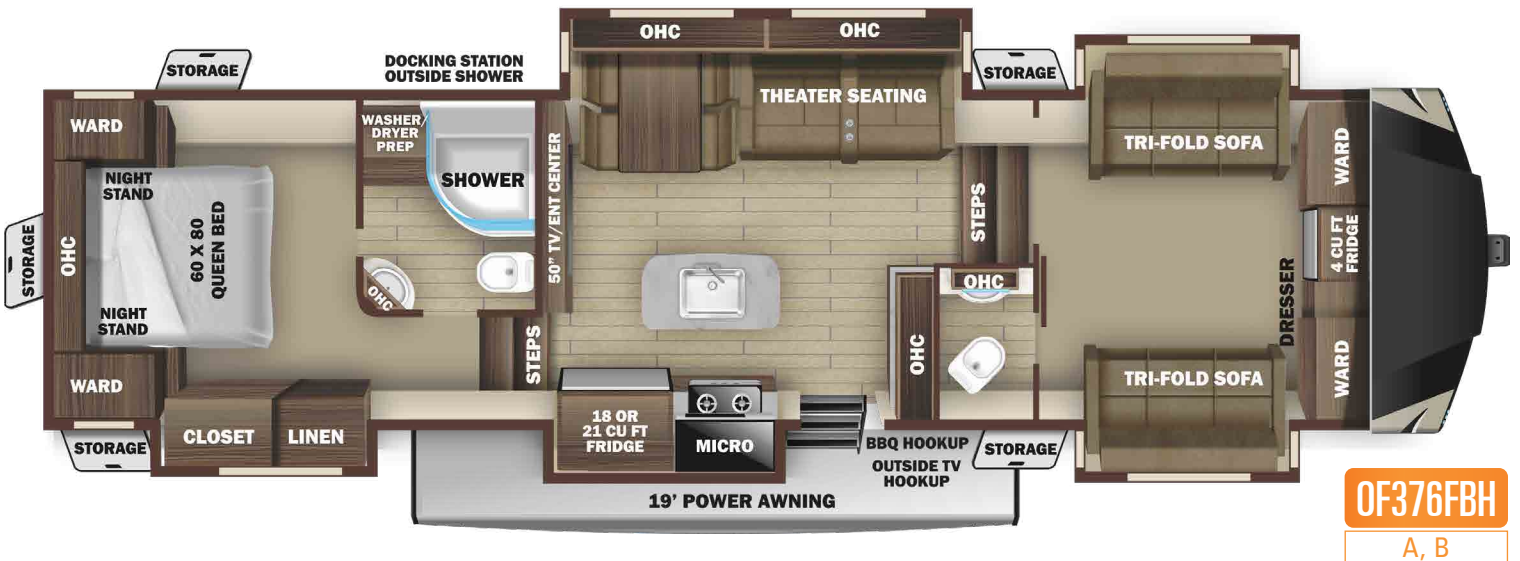
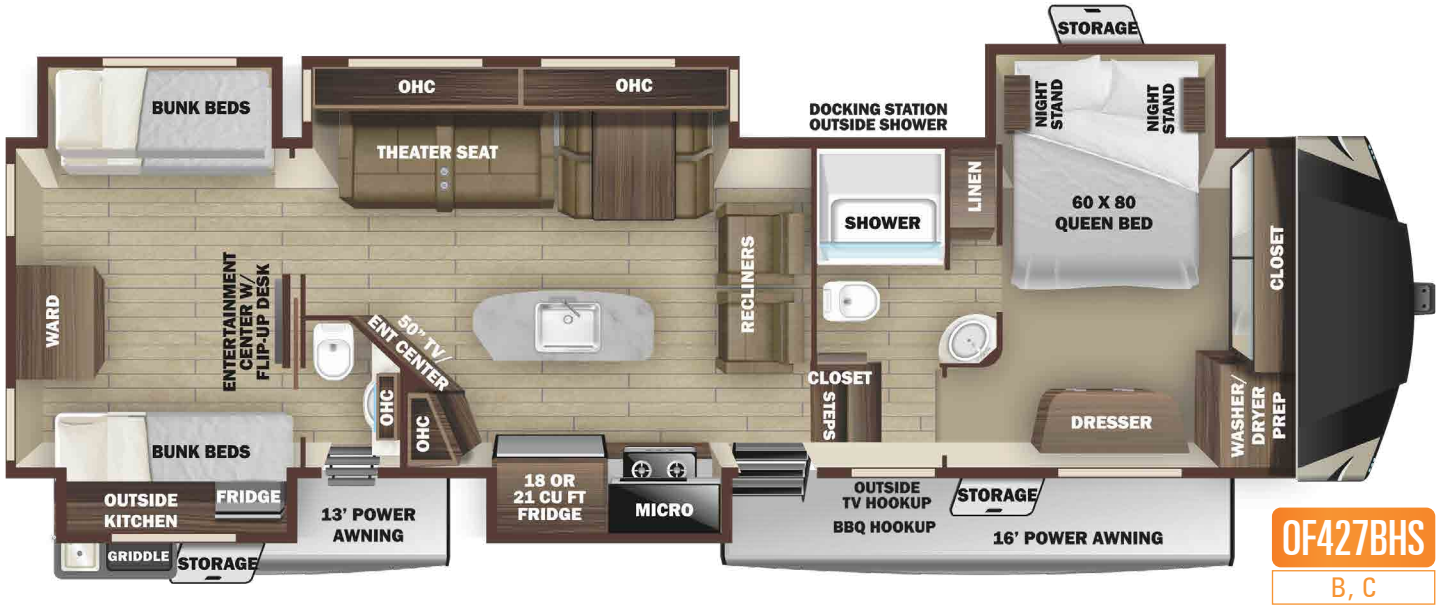


B



C

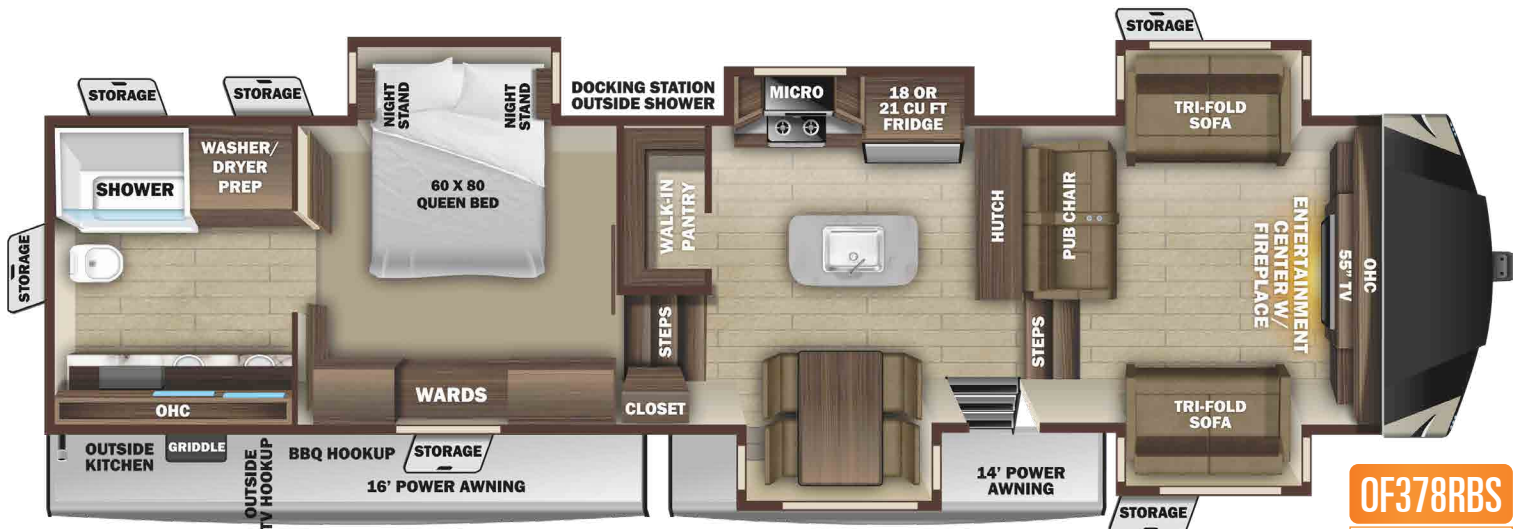
FIFTH WHEEL FLOORPLANS



TRAVEL TRAILER FLOORPLANS



OF371MBH
A



OF378RBS
A



OF373RBS
A

EXPLORE OUR BRANDS AT HIGHLANDRIDGERV.COM



MORE ROOM
LESS WEIGHT

This is our mission at Highland Ridge RV. It drives us to innovate and revolutionize the RV industry and it's why our products are 10 - 15% lighter than the competition.

 **ZERO DEGREE
TESTED**

We put our products into a zero degree chamber for five hours with thermometers placed in key areas throughout the unit. The results speak for themselves. See HighlandRidgeRV.com for more information

**RidgeLINK™**

Bluetooth Control of Slides, Lighting & More

**DEALER
LOCATOR**

CLICK [HERE](#) TO FIND YOUR LOCAL DEALER

From sales to service, Highland Ridge dealers are an integral part in ensuring you Own the Outdoors. Establishing a great relationship with your local Highland Ridge dealer is a key component in the enjoyment of your new Highland Ridge. By purchasing from a local dealer, you will have a convenient location for sales, parts and service support.



Highland
RIDGE RV

Own the Outdoors



We want you to spend less time worrying and more time owning the outdoors. That's why we're proud to back our products with a 3-Year Limited Structural Warranty, plus a 1-Year Limited Manufacturer's Warranty.

Due to continual research and advances, manufacturer reserves the right to change specifications, design, price, and equipment without notice, and assumes no responsibility for any error in the literature. Some items shown are not included as standard or optional equipment.