

RANGE LITE AIR

2024 TRAVEL TRAILERS



35.7140° N, 83.6532° W
Wears Valley, Tennessee

Ready for the Journey

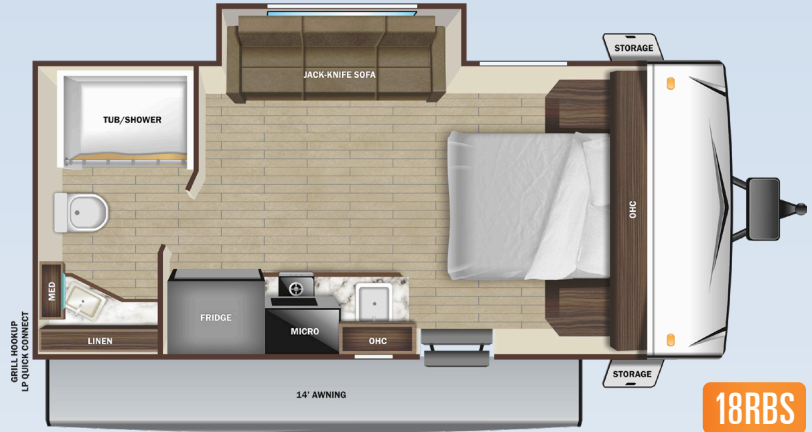




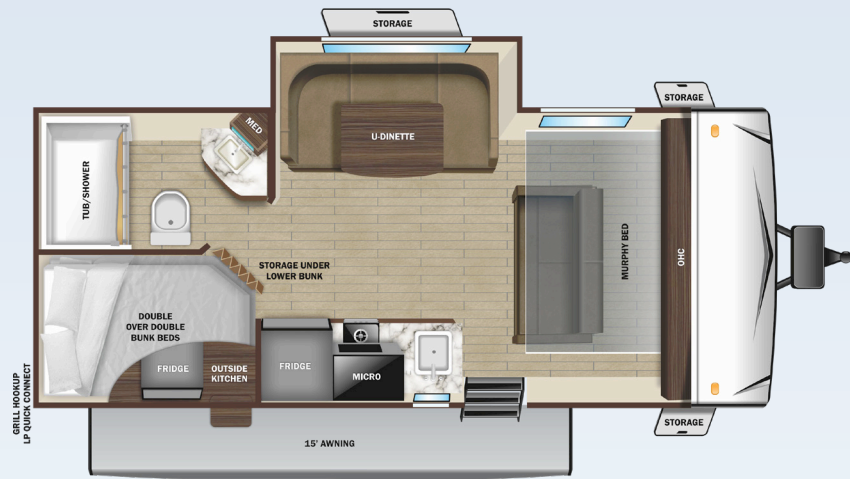
2024 Range Lite Air 17MDS



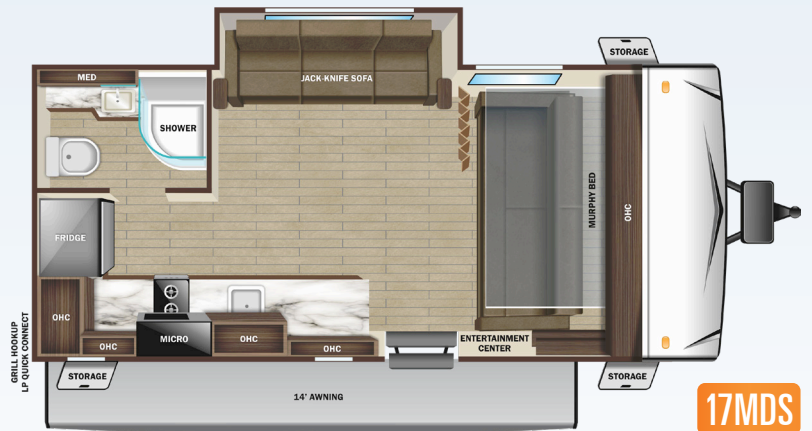
16FBS



18RBBS



19MBH



17MDS

STANDARD INTERIOR EQUIPMENT

- » 10 cu. ft. 12V refrigerator
- » 2-burner recessed range with flush mount glass cover
- » 5G antenna
- » 75 lb. ball bearing drawer guides
- » 80" bed
- » 81" interior height
- » Bathroom skylight and roof vent
- » Cable and satellite prep
- » Convection microwave
- » Deep bowl kitchen sink
- » Electrical outlets and USB ports in master bedroom
- » Hardwood cabinet doors
- » LED interior lighting
- » Range hood
- » Residential high-rise faucet
- » Residential vinyl flooring
- » Roller blackout night shades
- » Seamless pressed membrane countertops
- » Soft closing foot flush toilet

STANDARD EXTERIOR EQUIPMENT

- » 30 amp service
- » Dome style digital TV antenna with Wi-Fi prep
- » Exterior grill/griddle quick connect port
- » Flexible LP lines
- » Fully walkable roof
- » Impact resistant galvanized steel wheel wells
- » Magnum Roof™ system
- » Power awning
- » PVC roofing membrane (limited lifetime warranty)

- » Rear observation camera prep
- » Rear roof access ladder
- » Single axle design
- » Solid swing-down entry steps
- » Tinted safety-glass windows throughout
- » TuffShell™ - vacuum bonded laminated construction, reinforced with heavy-duty fiberglass and welded aluminum frames

CUSTOMER CONVENIENCE PACKAGE (MANDATORY)

- » 15" nitrogen filled off-road radial tires with aluminum rims
- » 13,500 BTU A/C
- » 2-20 lb. LP bottles
- » 32" 12V LED TV
- » Detachable power cord
- » Enclosed, insulated underbelly and fully insulated roof
- » Gas/electric water heater
- » Inverter pre-wire
- » JBL® Aura Cube stereo with Bluetooth® and miZONE™ technology
- » Power tongue jack
- » Rubber torsion axle with increase ground clearance adjustments
- » Side camera prep marker lights
- » Spare tire
- » Stabilizer jacks

OPTIONS

- » Xtend Solar I Package (200 watt solar panel with 30 amp controller) (Mandatory)
- » Griddle with bumper bracket
- » 110V tank heat pads
- » Wi-Fi router

SPECIFICATIONS May Include Estimated Values	16FBS	18RBS	19MBH	17MDS
Unloaded Vehicle Weight (lbs.)	3915	4070	4480	4,250
Dry Hitch Weight (lbs.)	425	465	650	410
Gross Vehicle Weight Rating (GVWR)	4995	4995	5500	5,300
Cargo (Gross)	1080	925	1020	1,050
Exterior Length (Overall)	20' 0"	22' 7"	23' 6"	23' 0"
Exterior Height	10' 6"	10' 6"	10' 5"	10' 6"
Exterior Width (Including Wheel Wells)	8' 4"	8' 4"	8' 4"	8' 4"
Exterior Width (Slides Out)	9' 3"	9' 3"	10' 6"	9' 3"
Interior Height	6' 6"	6' 6"	6' 6"	6' 6"
Fresh Water Capacity (Gal.)*	61	61	61	61
Gray Waste Water Capacity (Gal.)	30	32	30	30
Black Waste Water Capacity (Gal.)	30	30	30	30
LP Capacity (lbs.)	40	40	40	40
Tire Size	15"	15"	15"	15"
Awning Size	11'	14'	15'	14'

*Includes Water Heater

TO LEARN MORE VISIT
openrangerv.com



Highland Ridge RV – Part of the Jayco Family of Companies



LOCAL DEALER INFO



Due to continual research and advances, manufacturer reserves the right to change specifications, design, price, and equipment without notice, and assumes no responsibility for any error in the literature. Some items shown are not included as standard or optional equipment.